

D-Dimer

D-Dimer

No. of Responders
642

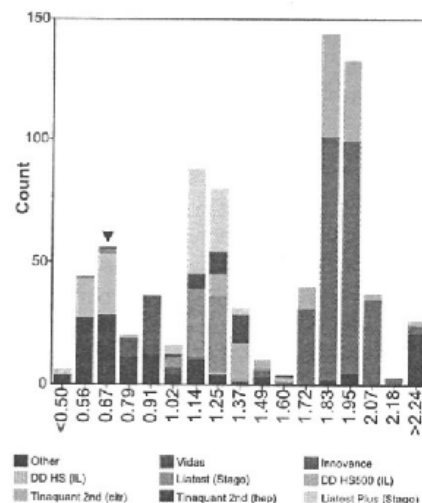
Sample No	16.50		
Sample Details	Plasma with a moderately elevated D-Dimer level		
	Units: mg/L D-Dimer, mg/L FEU		
	Prior Use: None		
Stability	31-May-2018		
Homogeneity	3.9 %	Homogeneity Parameter	D-Dimer
Number of Participants	679	Response Rate	95 %
Comments			

Own Reagent

	n	assigned value	CV (%)	Range	your result	z-score	your result	z-score	your result	z-score
I.L. HemosIL D-Dimer	17	0.61	9.9	0.52 - 0.71	0.71	1.63				
I.L. ACL Elite (Pro)	7	0.57		0.52 - 0.64						
I.L. ACL TOP Family	10	0.63	9.2	0.55 - 0.71	0.71	1.26				

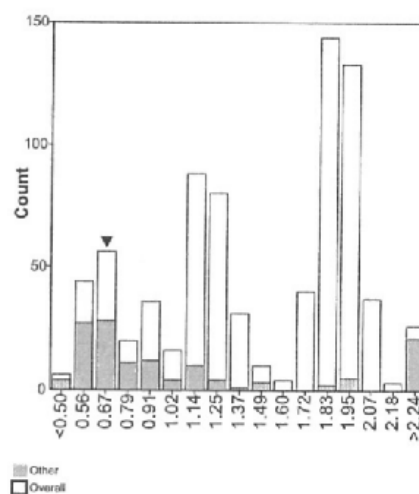
Other Reagents (mg/L D-Dimer)

	n	assigned value	CV (%)	Range
Abbott Quantia D-Dimer	3	0.52		0.39 - 0.58
Dialab D-Dimer Latex agglutination	1	0.64		
Helena Biosciences Auto D-Dimer	1	0.68		
I.L. HemosIL D-Dimer HS	45	0.63	6.8	0.47 - 1.23
Medirox D-Dimer	20	0.62	8.0	0.52 - 0.95
Nordic Red D-Dimer	9	0.75		0.38 - 0.77
Other	2	1.15		1.11 - 1.18
Radiometer AQT90 Flex D-Dimer	9	0.89		0.81 - 0.97
Tcoag TriniLIA D-Dimer	1	0.65		
Technoclone D-Dimer	1	0.85		



Other Reagents (mg/L FEU)

	n	assigned value	CV (%)	Range
Alere/Biosite Triage D-Dimer Test	1	1.17		
Beckman Coulter D-Dimer	2	0.87		0.72 - 1.02
BioMerieux Vidas D-Dimer	35	0.90	6.5	0.75 - 0.98
Boditech i-Chroma D-Dimer	2	1.43		0.60 - 2.26
Diagon Dia-D-Dimer	11	1.13	24.1	0.12 - 1.91
Diasys D-Dimer	1	0.60		
I.L. HemosIL Acustar D-Dimer	4	2.15		1.96 - 2.41
I.L. HemosIL D-Dimer 500	5	1.82		1.54 - 1.96
I.L. HemosIL D-Dimer HS500	94	1.86	4.8	1.65 - 3.81
Mitsubishi Pathfast D-Dimer	7	3.25		2.49 - 3.59
Olympus D-Dimer	7	1.17		0.70 - 1.39
Other	1	1.50		
Roche Cardiac Reader DD test	14	0.71	21.7	0.46 - 1.30
Roche Tinaquant 2nd gen. (cal. citrate)	27	1.34	4.3	1.23 - 1.54
Roche Tinaquant 2nd gen. (cal. heparin)	29	1.28	9.2	0.63 - 1.61
Siemens Immulite D-Dimer	6	2.72		2.50 - 3.10
Siemens Innovance D-Dimer	274	1.90	6.0	1.19 - 3.65
Stago / Roche Asserachrom D-Dimer	2	0.93		0.85 - 1.00
Stago / Roche Liatest D-Dimer	68	1.18	5.9	0.58 - 1.47
Stago Liatest D-Dimer Plus	76	1.17	7.0	1.06 - 1.32
Tosoh D-Dimer S	5	2.50		2.28 - 2.79



D-Dimer

D-Dimer

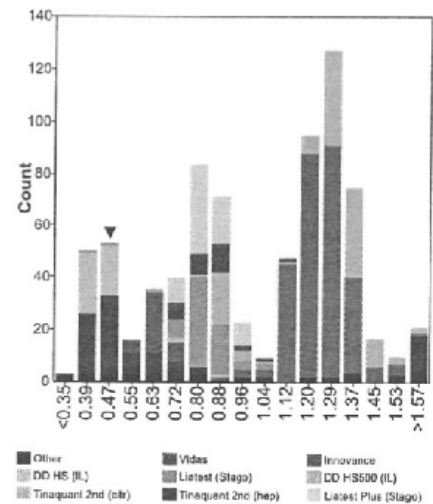
Sample No	16.51			
Sample Details	Plasma with a slightly elevated D-Dimer level			
	Units: mg/L D-Dimer, mg/L FEU			
	Prior Use: 2016-1			
Stability	31-May-2018			
Homogeneity	3.7 %	Homogeneity Parameter	D-Dimer	
Number of Participants	679	Response Rate	95 %	
Comments				

Own Reagent

	n	assigned value	CV (%)	Range	your result	z-score	your result	z-score	your result	z-score
I.L. HemosIL D-Dimer	17	0.44	12.6	0.35 - 0.51	0.50	1.14				
I.L. ACL Elite (Pro)	7	0.44		0.38 - 0.48						
I.L. ACL TOP Family	10	0.45	13.3	0.35 - 0.51	0.50	0.84				

Other Reagents (mg/L D-Dimer)

	n	assigned value	CV (%)	Range
Abbott Quantia D-Dimer	3	0.45		0.37 - 0.57
Dialab D-Dimer Latex agglutination	1	0.45		
Helena Biosciences Auto D-Dimer	1	0.43		
I.L. HemosIL D-Dimer HS	45	0.44	7.1	0.38 - 0.88
Medirox D-Dimer	20	0.42	7.2	0.35 - 0.47
Nordic Red D-Dimer	9	0.51		0.44 - 0.61
Other	2	0.75		0.74 - 0.76
Radiometer AQT90 Flex D-Dimer	9	0.62		0.58 - 0.71
Tcoag TriniLIA D-Dimer	1	0.32		
Technoclone D-Dimer	1	0.55		



Other Reagents (mg/L FEU)

	n	assigned value	CV (%)	Range
Alere/Biosite Triage D-Dimer Test	1	0.72		
Beckman Coulter D-Dimer	2	0.54		0.45 - 0.63
BioMerieux Vidas D-Dimer	35	0.64	6.5	0.57 - 0.71
Boditech I-Chroma D-Dimer	2	0.99		0.46 - 1.51
Diagon Dia-D-Dimer	11	0.72	40.1	0.44 - 1.22
Diasys D-Dimer	1	0.40		
I.L. HemosIL Acustar D-Dimer	4	1.43		1.30 - 1.59
I.L. HemosIL D-Dimer 500	5	1.35		1.00 - 1.37
I.L. HemosIL D-Dimer HS500	94	1.34	5.7	1.12 - 2.57
Mitsubishi Pathfast D-Dimer	7	2.07		1.70 - 2.33
Olympus D-Dimer	7	0.78		0.74 - 1.07
Other	1	1.01		
Roche Cardiac Reader DD test	14	0.49	25.3	0.31 - 0.90
Roche Tinaquant 2nd gen. (cal. citrate)	27	0.89	4.8	0.81 - 1.32
Roche Tinaquant 2nd gen. (cal. heparin)	29	0.83	10.4	0.69 - 1.12
Siemens Immulite D-Dimer	6	1.75		1.61 - 1.88
Siemens Innovance D-Dimer	274	1.24	7.0	0.87 - 1.80
Stago / Roche Asserachrom D-Dimer	2	0.71		0.69 - 0.72
Stago / Roche Liatest D-Dimer	68	0.82	8.5	0.42 - 1.05
Stago Liatest D-Dimer Plus	76	0.83	9.2	0.67 - 1.09
Tosoh D-Dimer S	5	1.68		1.53 - 1.80

