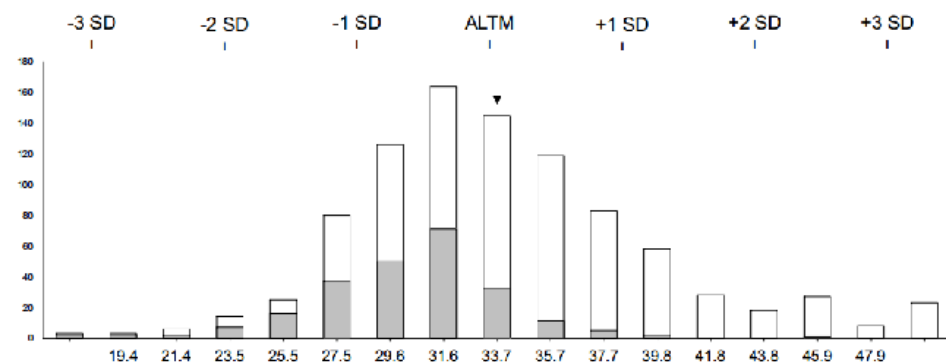
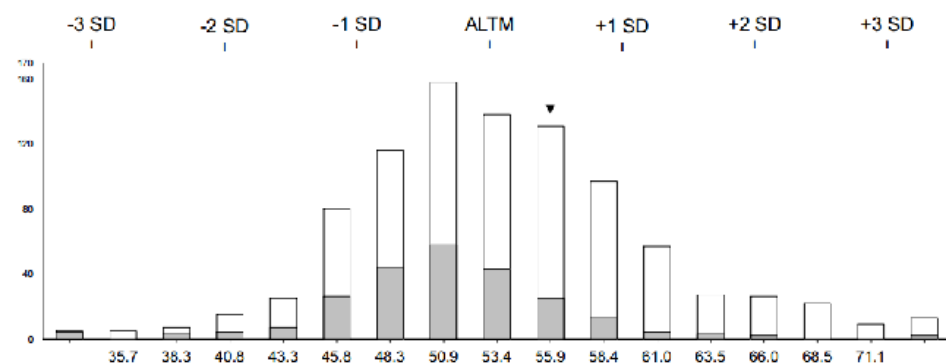


Histograms



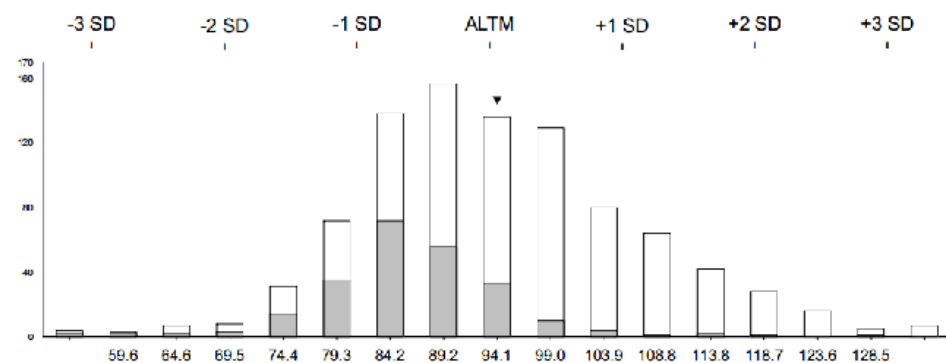
Sample: 491 (n=919)
 Target Value : 33.4 nmol/L
 ALTM : 33.7 nmol/L
 Your Method Mean (MM) : 30.4 nmol/L
 Your result : 33.3 nmol/L
 Bias from Target Value : -0.3 %
 Bias from ALTM : -1.0 %
 Bias from MM: 9.5 %

□ All Methods
 ■ Your method (DiaSorin Liaison Total)



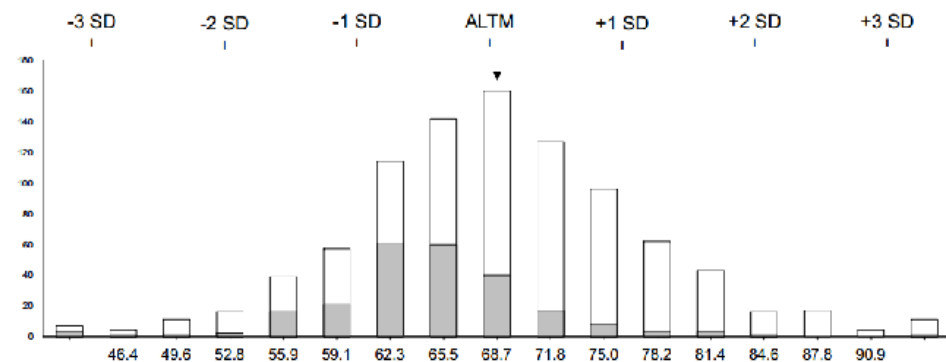
Sample: 492 (n=919)
 Target Value : 51.6 nmol/L
 ALTM : 53.4 nmol/L
 Your Method Mean (MM) : 51.0 nmol/L
 Your result : 56.1 nmol/L
 Bias from Target Value : 8.7 %
 Bias from ALTM : 5.1 %
 Bias from MM: 10.1 %

□ All Methods
 ■ Your method (DiaSorin Liaison Total)



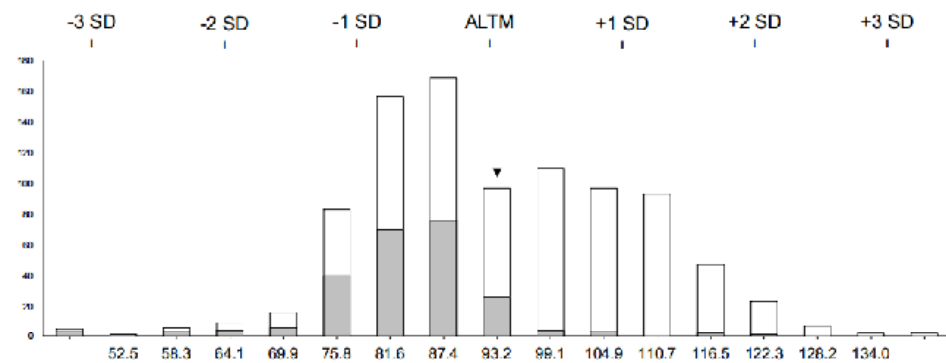
Sample: 493 (n=919)
 Target Value : 91.8 nmol/L
 ALTM : 94.1 nmol/L
 Your Method Mean (MM) : 86.1 nmol/L
 Your result : 94.0 nmol/L
 Bias from Target Value : 2.4 %
 Bias from ALTM : -0.1 %
 Bias from MM: 9.2 %

□ All Methods
 ■ Your method (DiaSorin Liaison Total)



Sample: 494 (n=919)
 Target Value : 71.9 nmol/L
 ALTM : 68.7 nmol/L
 Your Method Mean (MM) : 64.7 nmol/L
 Your result : 69.6 nmol/L
 Bias from Target Value : -3.2 %
 Bias from ALTM : 1.4 %
 Bias from MM: 7.6 %

□ All Methods
 ■ Your method (DiaSorin Liaison Total)



Sample: 495 (n=919)
 Target Value : 97.6 nmol/L
 ALTM : 93.2 nmol/L
 Your Method Mean (MM) : 83.6 nmol/L
 Your result : 91.8 nmol/L
 Bias from Target Value : -5.9 %
 Bias from ALTM : -1.5 %
 Bias from MM: 9.8 %

□ All Methods
 ■ Your method (DiaSorin Liaison Total)