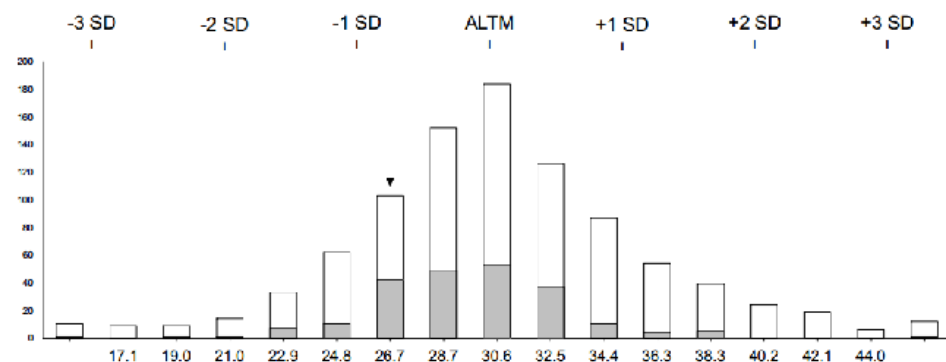
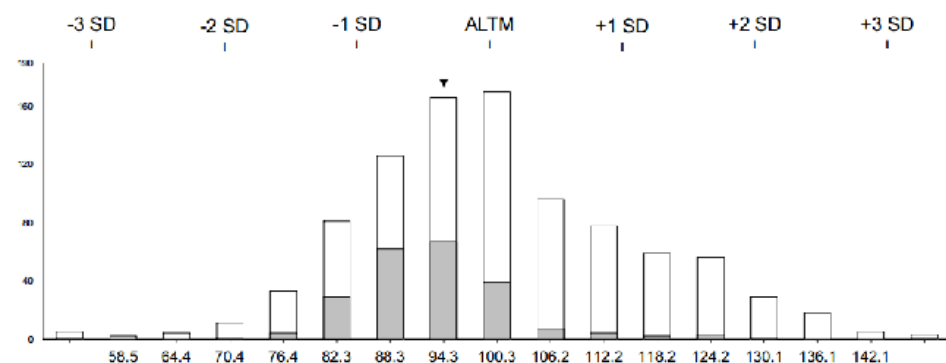


Histograms



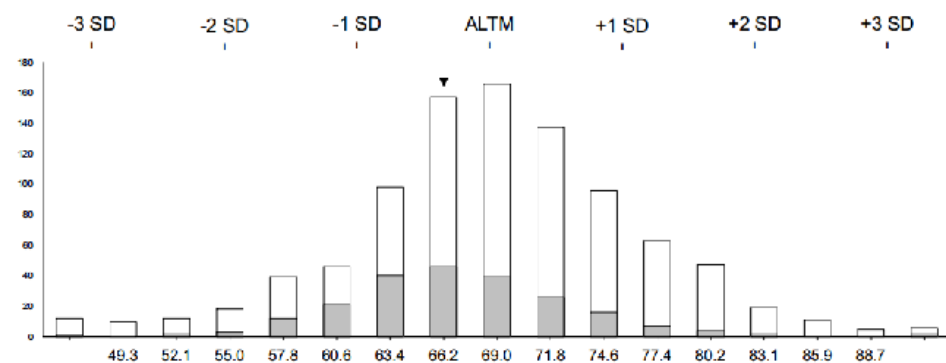
Sample: 486 (n=935)
 Target Value : 28.7 nmol/L
 ALTM : 30.6 nmol/L
 Your Method Mean (MM) : 29.5 nmol/L
 Your result : 26.8 nmol/L
 Bias from Target Value : -6.6 %
 Bias from ALTM : -12.4 %
 Bias from MM: -9.3 %

□ All Methods
 ■ Your method (DiaSorin Liaison Total)



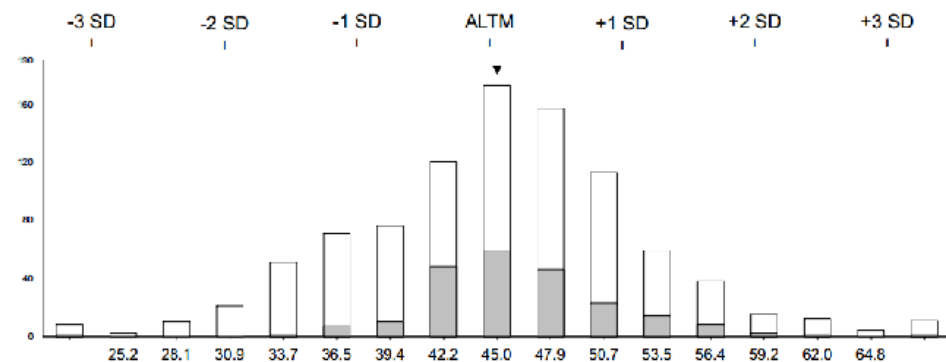
Sample: 487 (n=935)
 Target Value : 92.9 nmol/L
 ALTM : 100.3 nmol/L
 Your Method Mean (MM) : 92.7 nmol/L
 Your result : 93.6 nmol/L
 Bias from Target Value : 0.8 %
 Bias from ALTM : -6.6 %
 Bias from MM: 0.9 %

□ All Methods
 ■ Your method (DiaSorin Liaison Total)



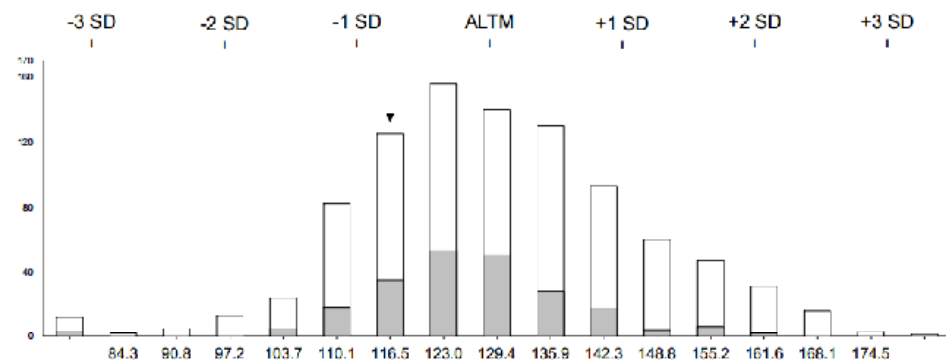
Sample: 488 (n=935)
 Target Value : 66.8 nmol/L
 ALTM : 69.0 nmol/L
 Your Method Mean (MM) : 66.9 nmol/L
 Your result : 65.4 nmol/L
 Bias from Target Value : -2.1 %
 Bias from ALTM : -5.2 %
 Bias from MM: -2.2 %

□ All Methods
 ■ Your method (DiaSorin Liaison Total)



Sample: 489 (n=935)
 Target Value : 46.7 nmol/L
 ALTM : 45.0 nmol/L
 Your Method Mean (MM) : 46.0 nmol/L
 Your result : 45.1 nmol/L
 Bias from Target Value : -3.4 %
 Bias from ALTM : 0.1 %
 Bias from MM: -2.0 %

□ All Methods
 ■ Your method (DiaSorin Liaison Total)



Sample: 490 (n=935)
 Target Value : 116.9 nmol/L
 ALTM : 129.4 nmol/L
 Your Method Mean (MM) : 126.1 nmol/L
 Your result : 117.6 nmol/L
 Bias from Target Value : 0.6 %
 Bias from ALTM : -9.1 %
 Bias from MM: -6.7 %

□ All Methods
 ■ Your method (DiaSorin Liaison Total)